



# Blackout Collection

## B3200 & B3800

**B3200 Glass Fibre Screen Blackout**  
6 Colours. 1600mm & 2489mm wide

**B3800 Heavy Duty PVC Blackout**  
6 Colours. 3005mm wide

[www.shy.co.uk](http://www.shy.co.uk)

# Solarblock®

## Blackout Collection

### B3200 & B3800

#### B3200 Glass Fibre Screen Blackout

671g/m <sup>2</sup>		Solar Optical Properties			
Code	Colour	Ts%	Rs%	As%	Tv%
0101	White/White	0	71	29	0
0105	White/Bone	0	71	29	0
0109	White/Platinum	0	71	29	0
0505	Bone/Bone	0	71	29	0
0509	Bone/Platinum	0	71	29	0
1919	Charcoal/Charcoal	0	71	29	0

B3200 is Microban®, Greenguard Gold, Lead Free, Printable, FR to BS 5867 2008 Part 2 and includes a special technology to limit tracking during wind up.

Ts = Solar Transmittance Rs = Solar Reflectance As = Solar Absorption Tv = Visual Transmittance

#### Fabric Performance - Heat

These performance characteristics are for internal blinds. In general the lighter the reverse colour the greater the reflectance of heat.

Care should be taken to manage heat build-up between the blind and glass, particularly if the glass type reflects energy back into the room.

#### Fabric Performance - Energy

Generally, blinds are used in conjunction with glazing and there is a standard calculation for heat transferred into the building known as  $g_{tot}$ . This information is available by contacting us.

#### Fabric Care

Remove dust with a vacuum cleaner.

Periodically clean with a mixture of mild detergent and water (max 30°C) using a soft cloth, brush or sponge. Do not rub fabric too hard. Rinse thoroughly with clean water and allow to air dry, do not roll up wet. Use a non-coloured eraser to remove superficial stains. If in doubt test a small area first.

#### B3800 Heavy Duty PVC Blackout

577g/m <sup>2</sup> except Black 475g/m <sup>2</sup>		Solar Optical Properties			
Code	Colour	Ts%	Rs%	As%	Tv%
0101	White	0	77	23	0
0505	Bone	0	72	28	0
1414	Sand	0	62	38	0
0909	Platinum	0	49	51	0
1313	Dark Grey	0	27	73	0
2020	Black (475g/m <sup>2</sup> )	0	4	96	0

B3800 is ASTM G21 bacterial, mould and mildew resistant, Greenguard Gold, Lead Free, Printable and FR to BS 5867 2008 Part 2

#### Fabric Join Guide

Joins in the fabric will be seen if both the width and drop of the blind exceed the manufactured width of the cloth (please see the other side of this card). Usually the cloth is run horizontally, and the joins are positioned near the top of the blind, but if there is a mullion or feature in the window, on request it may be possible to line the join up with this. When only one blind in an area needs a join, on request we can match the rest of the blinds with a similar join and cloth direction.

#### Other Fabrics

SHY have an extensive range of fabrics suitable for internal and/or external use from black-out to screen fabrics with different solar and optical performance. A range of insect screens are also available.

#### Contact us

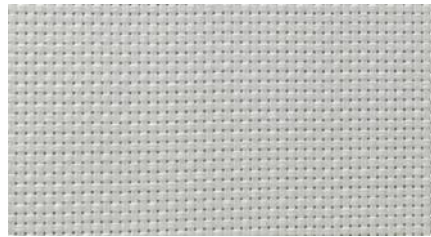
E [info@shy.co.uk](mailto:info@shy.co.uk)  
T +44 (0)1462 455400  
[www.shy.co.uk](http://www.shy.co.uk)

# B3200

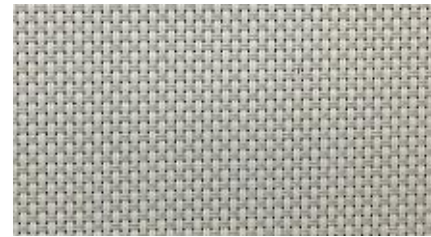
671g/m<sup>2</sup> 0.58mm thick

1600mm & 2489mm wide

Suitable for all SHY systems.



0101  
White/White



0105  
White/Bone



0109  
White/Platinum



0505  
Bone/Bone



0509  
Bone/Platinum



1919  
Charcoal/Charcoal



All numbers  
BACK

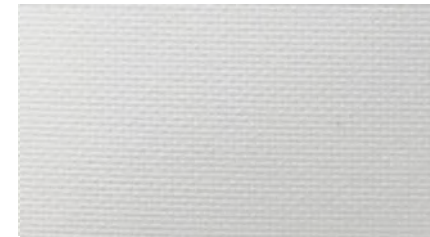
# B3800

All colours except Black 577g/m<sup>2</sup>  
Black 475g/m<sup>2</sup>

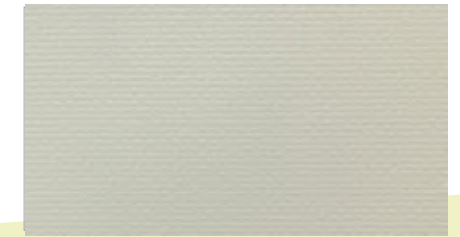
0.47mm thick 3005mm wide

0.37mm thick 3005mm wide

Suitable for all SHY systems.



0101  
White



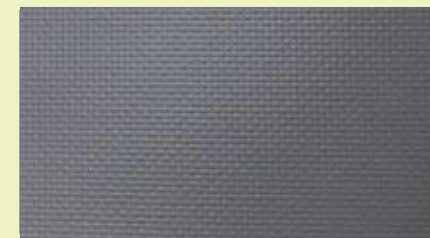
0505  
Bone



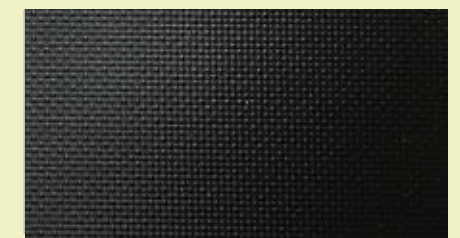
1414  
Sand



0909  
Platinum



1313  
Dark Grey



2020  
Black



Solarblock fabrics prevent or significantly reduce the amount of light passing through the fabric. This can also have a significant secondary benefit of controlling heat gain. The performance of the fabric depends on a number of factors including, for example, the colour and construction of the cloth and the type of glazing used. The charts shown in this specification guide are intended to provide an overview of each fabric performance but much more comprehensive information is available on request.



This card is intended to provide a good overview of the performance characteristics of these fabrics. However, we also have far more detailed performance data including full spectral analysis for building modelling – please contact us for further information.

Please note fabrics are subject to possible colour variations between batches.

Every care has been taken in producing this fabric card but SHY (UK) and its distributors cannot be held responsible for any errors or omissions. As we have a policy of continuous product improvement we reserve the right to amend fabric ranges and specifications without notice. E&OE

© SHY (UK) 2017. SHY, ZIP (logo), SUNFACTA, OBSCURA, SOLARBLOCK, SOLARSCENE & SOLARSOUND are registered trademarks.

V1 2017